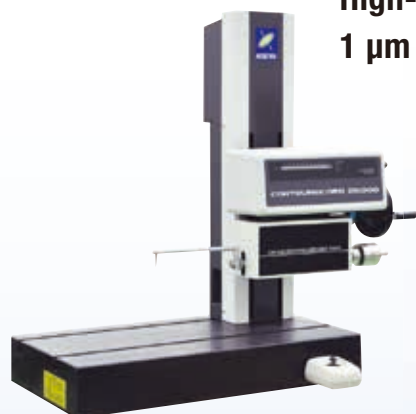




Standard series

CONTOURECORD 2600G

High-Accuracy Contour Measurement of
1 μm or Less in Z-Direction (for displacement of 5 mm)



CONTOURECORD 2600G



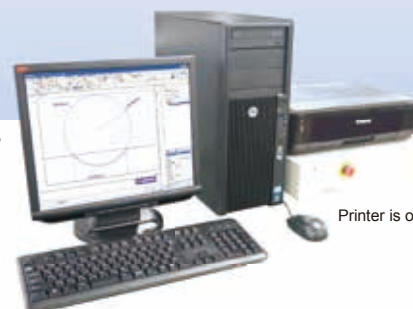
Printer is optional

CONTOURECORD 1600G

Enhanced Operability



CONTOURECORD 1600G



Printer is optional

Auto Element Recognition (AI Function)

This function automatically determines the type of element (point, line, circle).

Dimension Display Function

The actual measured values for parameters and geometric deviation can be displayed on the diagram.

Profile Synthesis Function

The limitations on the analysis range due to the angle of the stylus are addressed with the synthesis function.

Peak and Valley Function

This function enables the maximum workpiece point to be detected by tracing with the stylus, simplifying alignment.

Calculation Point Repeat Function

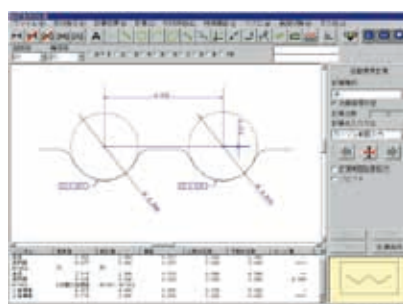
Overall workpiece analysis can be executed after completing only one pattern analysis for workpieces where certain shapes are repeated.

High Precision Contour Profile Evaluation (2600G)

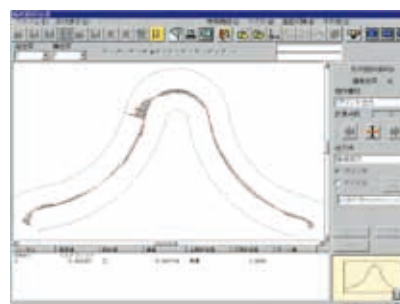
The 2600G and 1600G are ideal for the evaluation of non-spherical lenses, optical fiber connectors, ball screws and other parts where high profile accuracy is required.

Host of Contour Evaluation Functions

A wide range of evaluation functions is provided. Standard functions include a measured data (point data)/design value deviation collation function, design value generation function, best fit function and IGES/DXF conversion function to facilitate communication with CAD systems.



Dimension line display function (TIMS)



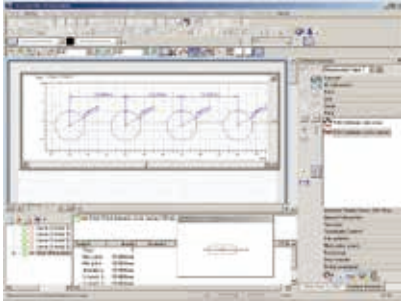
Contour profile nominal value collation (TIMS)

CONTOURECORD 2600G

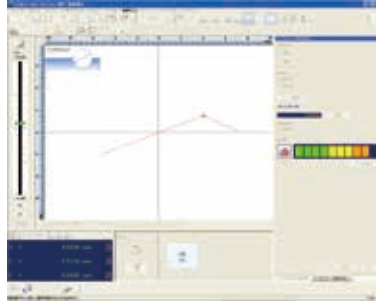
CONTOURECORD 1600G

ACCTee Measurement & Analysis Software

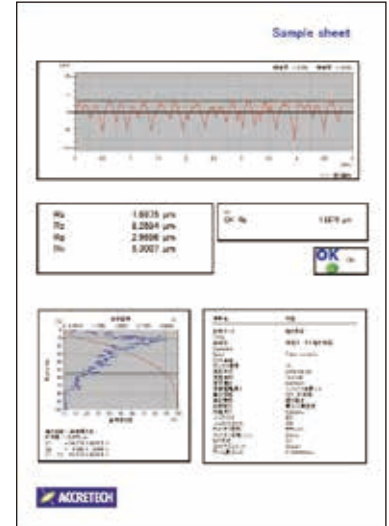
ACCTee is contour profile measurement and analysis software with enhanced operability. Provided with wizard modes for easier operation, as well as a variety of support functions such as "AI function", "self-diagnosis function" and "peak and valley detection function", ACCTee makes all measurement tasks easier and more efficient.



Dimension line display function



Peak and Valley function (ACCTee)



Print data sheet

Specifications

Model			CONTOURECORD 2600G/1600G							
			-11	-12	-13	-14	-21	-22	-23	-24
Measuring range		Z-axis (vertical)	50 mm							
		X-axis (horizontal)	100 mm				200 mm			
Accuracy	C1600G series	Z-axis indication accuracy (vertical)	±0.25% (full scale)							
		Resolution	0.1 μm/5 mm range, 0.4 μm/20 mm range, 1 μm/50 mm range							
	C2600G series	Z-axis indication accuracy (vertical)	± (0.8 + 2H /100) μm (H: Measuring height mm)							
		Resolution	0.025 μm/Full range							
	Common item	X-axis indication accuracy (horizontal)	± (1 + 2L/100) μm (L: Measuring length mm)							
		Resolution	0.04 μm							
Tracing driver		Straightness accuracy	1 μm/100 mm				2 μm/200 mm			
		Sensing method	Moire striped scale				Linear scale			
		Measuring speed	0.03, 0.06, 0.15, 0.3, 0.6, 1.5, 3, 6 mm/s (8 speeds)							
		Column up/down speed (Z-axis)	—	10 mm/s (3 mm/s)* ¹			—	10 mm/s (3 mm/s)* ¹		
Detector	Sensing method	C1600G series	Differential transducer							
		C2600G series	Laser optical diffraction scale							
	Stylus, measuring force, function		Replaceable, 10 mN to 30 mN, and stepless(retraction) function							
	Stylus radius (material)		25 μmR (conical carbide) One piece equipped as standard							
	Measuring direction, position		Pull/push and Up/down directions, Max. following angle: 77°							
Operation range		Tracing driver stroke	100 mm				200 mm			
		Column up/down stroke	250 mm		450 mm		250 mm		450 mm	
Grinate table	Permissible loading weight* ²	Dimensions	600×317 mm			1000×450 mm	600×317 mm			1000×450 mm
		In use of desktop anti-vibration table (E-VS-S57B/S58B)	41 kg	35 kg	26 kg	-	35 kg	29 kg	20 kg	-
		In use of large-size desktop anti-vibration table (E-VS-S45A)	50 kg	40 kg	30 kg	91 kg	50 kg	40 kg	30 kg	85 kg
		In use of anti-vibration table (E-VS-R16 B)	50 kg	40 kg	30 kg	41 kg	50 kg	40 kg	30 kg	35 kg
		In use of anti-vibration table (E-VS-R21 B)	50 kg	40 kg	30 kg	100 kg	50 kg	40 kg	30 kg	100 kg
Other	Installation dimensions* ³	Width	2000 mm			2300 mm	2000 mm			2300 mm
		Depth	1000 mm				1000 mm			
		Height	1700 mm		1900 mm		1700 mm		1900 mm	
	Weight		115 kg	125 kg	130 kg	235 kg	125 kg	130 kg	140 kg	245 kg
	Power supply, frequency, consumption		Single-phase AC 100 V ±10% (grounding required), 50 Hz/60 Hz, 710 VA							

*1: For joystick operation

*2: The dimensions of -11,-12,-13,-21,-22,-23 include the optional stand (E-VS-S13A), desktop anti-vibration table (E-VS-S57B) and computer rack (E-DK-S24A).
The dimensions of -14,-24 include the optional large anti-vibration table (E-VS-R16B) and computer rack (E-DK-S24A).